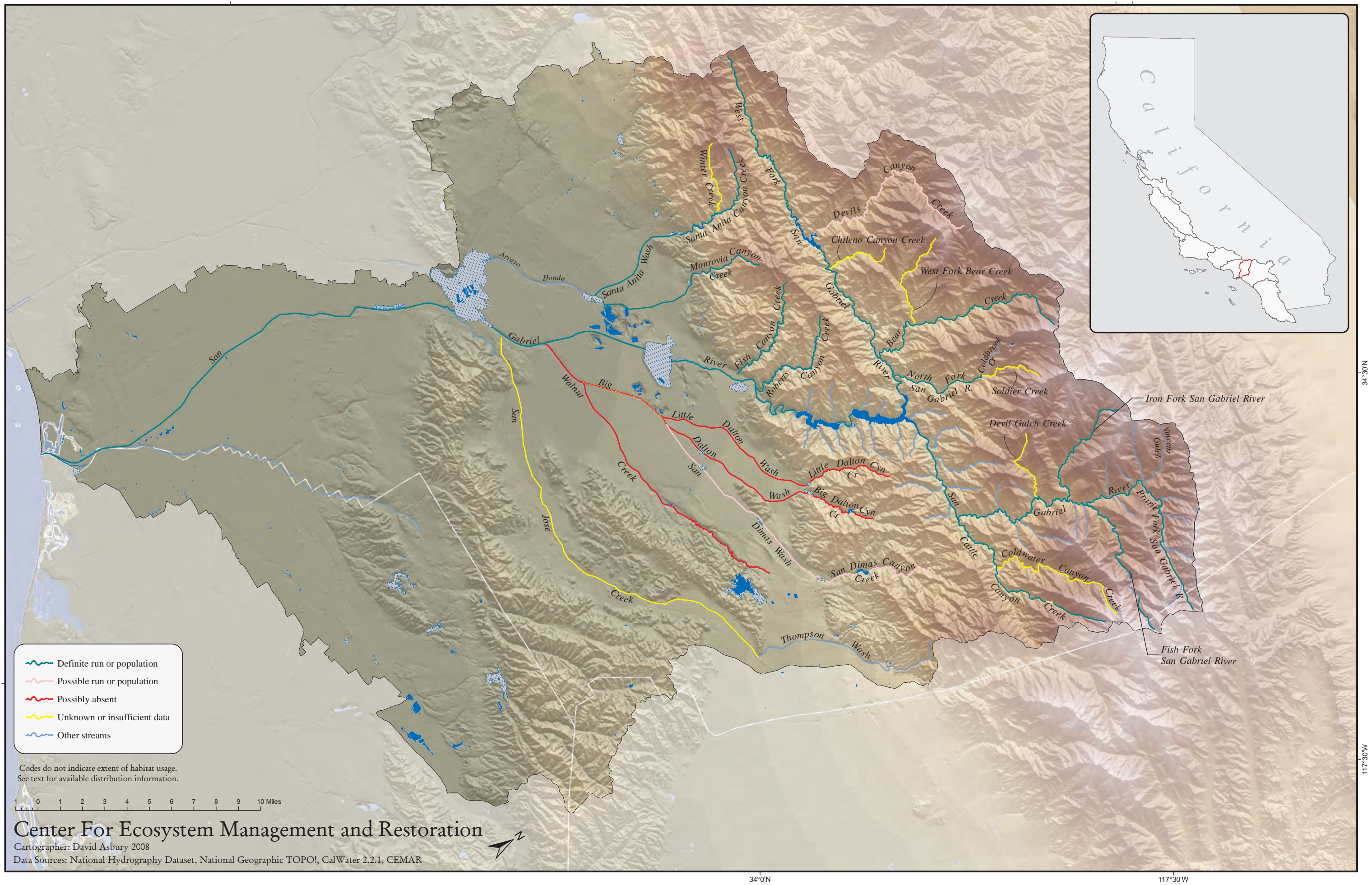


Figure 29. Current status of *Oncorhynchus mykiss* in coastal streams of southern Los Angeles County, California



Codes do not indicate extent of habitat usage. See text for available distribution information.

Center For Ecosystem Management and Restoration

Cartographer: David Asbury 2008  
Data Sources: National Hydrography Dataset, National Geographic TOPOI, CalWater 2.2.1, CEMAR